

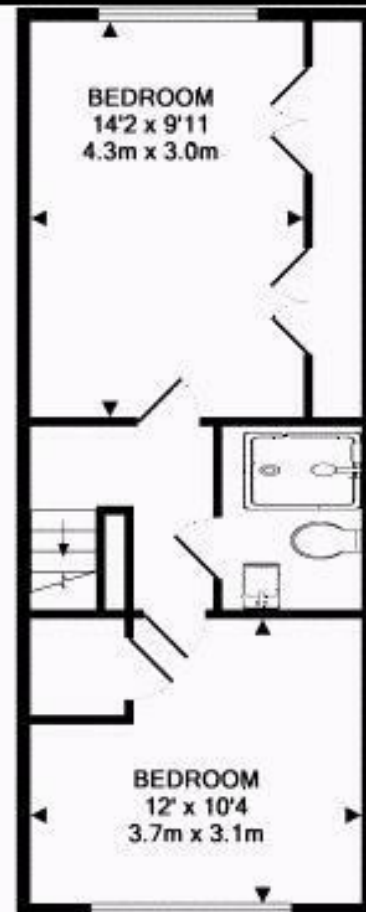
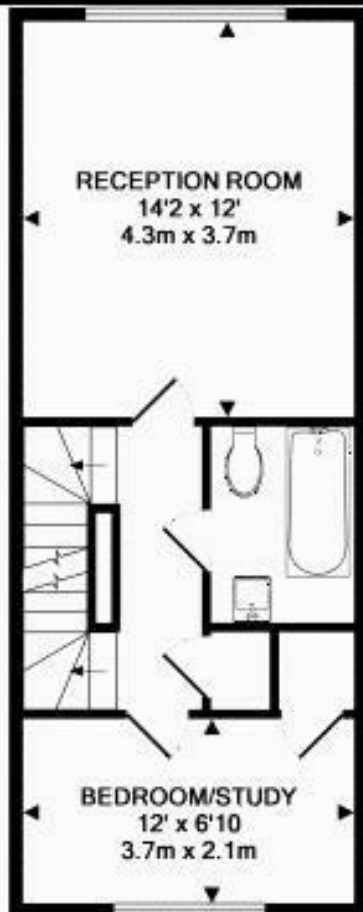
Blundell Close, London, E8 2RS



£2,700 Per Month

A fantastic three bedroom town house situated over three levels within a private mews close to Hackney Downs and Hackney Central stations. The beautifully presented house features a large kitchen/diner leading to a private rear garden, good size bright reception with good quality wood flooring, two double bedrooms and a single bedroom/study, two bathrooms and lots of storage. There is also a separate w/c and utility room as well as an allocated parking space. The property would suit professional sharers, a couple or family looking for quality and quiet but enjoying a good location close to public transport and amenities.





TOTAL APPROX. FLOOR AREA 1078 SQ.FT. (100.2 SQ.M.)

Whilst every attempt has been made to ensure the accuracy of the floor plan contained here, measurements of doors, windows, rooms and any other items are approximate and no responsibility is taken for any error, omission, or mis-statement. This plan is for illustrative purposes only and should be used as such by any prospective purchaser. The services, systems and appliances shown have not been tested and no guarantee as to their operability or efficiency can be given.
Made with Metropix ©2012

Energy Efficiency Rating		Current	Potential
Very energy efficient - lower running costs			
(92-plus) A			
(81-91) B			
(69-80) C			
(55-68) D			
(39-54) E			
(21-38) F			
(1-20) G			
Not energy efficient - higher running costs			
England & Wales	EU Directive 2002/91/EC		

Environmental Impact (CO ₂) Rating		Current	Potential
Very environmentally friendly - lower CO ₂ emissions			
(92-plus) A			
(81-91) B			
(69-80) C			
(55-68) D			
(39-54) E			
(21-38) F			
(1-20) G			
Not environmentally friendly - higher CO ₂ emissions			
England & Wales	EU Directive 2002/91/EC		



Associated Offices in London, Essex and Hertfordshire
Kings Head Office Tudor Lodge, Burton Lane, Goffs Oak, Hertfordshire EN7 6SY Tel: 01707-872000

